

PLAN 7

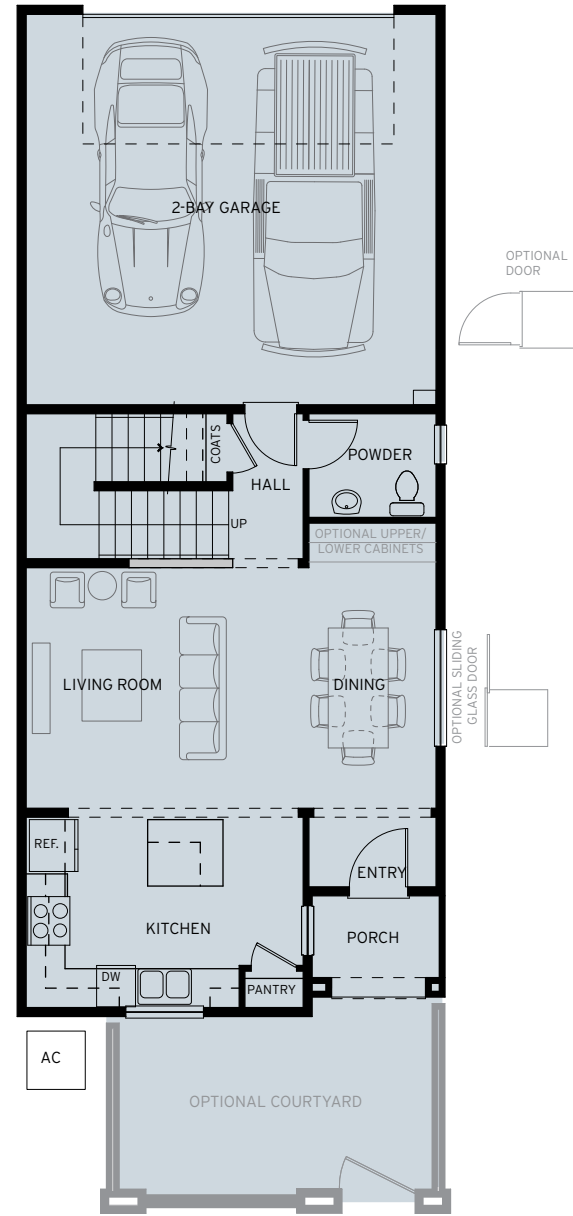
1,559 SF

3 BEDROOMS

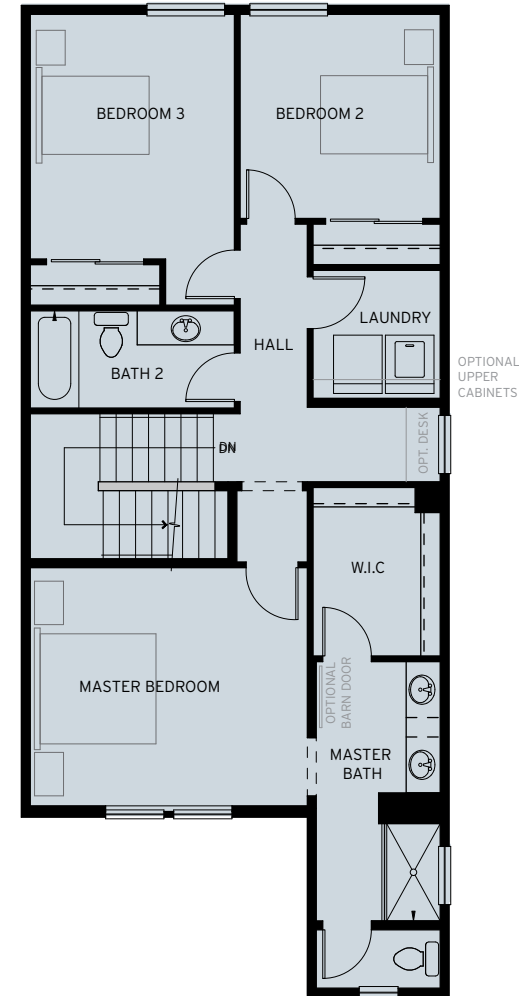
2.5 BATHS

Open concept great room, kitchen, dining, two-car garage.

Optional: Courtyard, slider.



MAIN FLOOR



UPPER FLOOR



PLAN 7

1,559 SF

3 BEDROOMS

2.5 BATHS

This three-bedroom home offers open concept living across two stories. The master bedroom includes an ensuite and walk-in closet. The laundry room, pantry and powder room offer convenience. The two-car garage is great for vehicles and storage.



A



B



C

PLAN 8

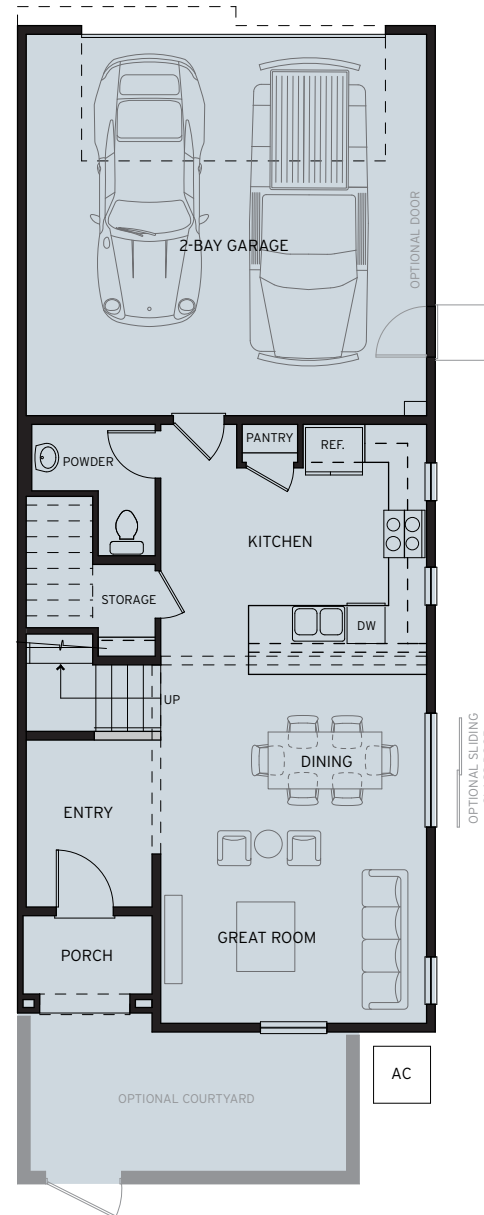
1,730 SF

3 BEDROOMS

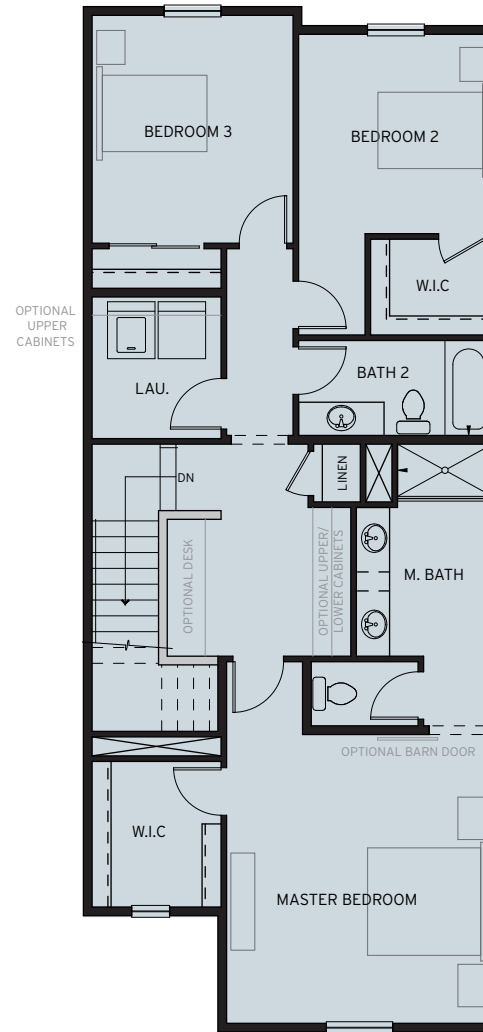
2.5 BATHS

Open concept, great room, kitchen and dining, walk-thru loft, two-car garage.

Optional: Courtyard, sliding door.



MAIN FLOOR



UPPER FLOOR



PLAN 8

1,730 SF

3 BEDROOMS

2.5 BATHS

The two-level residence eight offers a versatile walk-thru loft space. The kitchen, dining, and living flow seamlessly and create the perfect gathering space. The secondary bedrooms are spacious and one offers a walk-in closet. The large master includes a generous size walk-in closet that includes a window for natural light. The convenient laundry, powder room and two-car garage round out this bright and usable plan.



A



B



C

PLAN 9

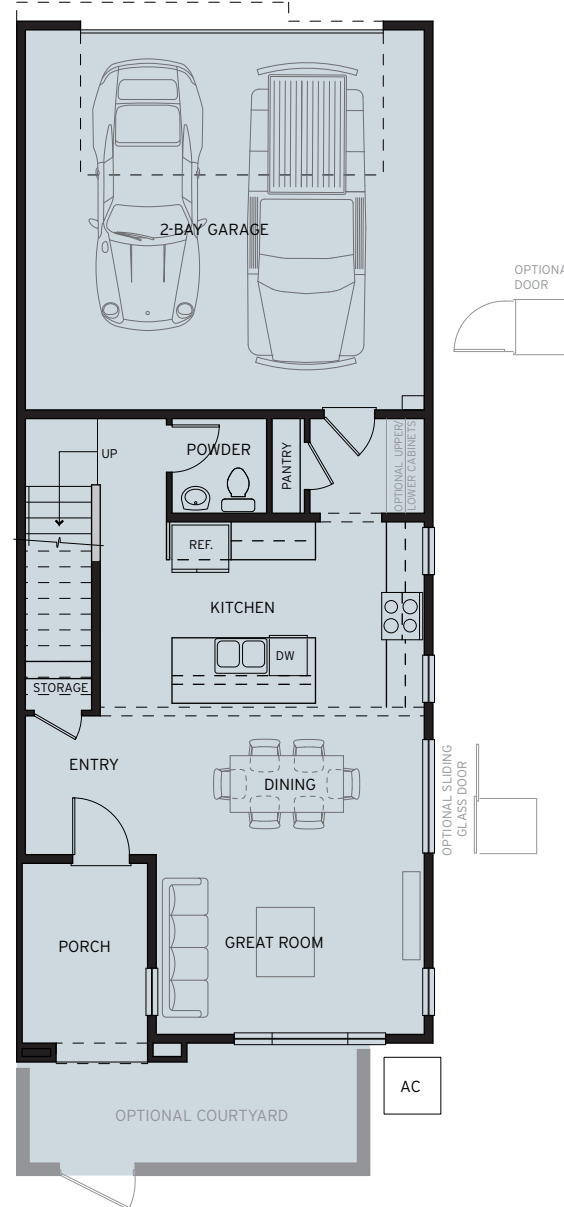
1,835 SF

3 - 4 BEDROOMS

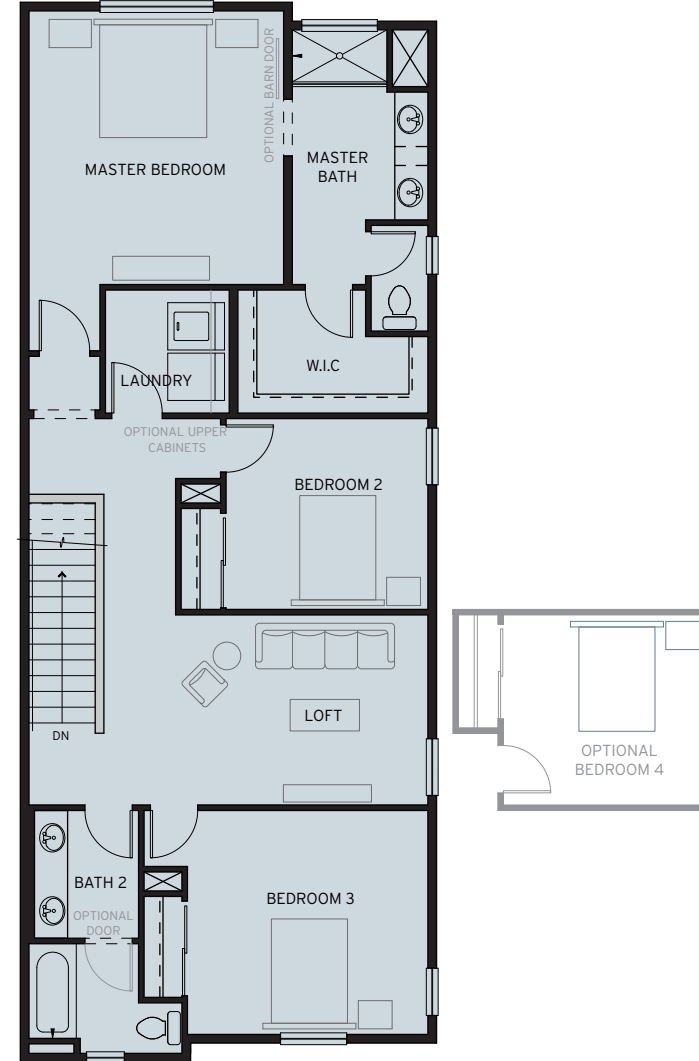
2.5 BATHS

Open concept, great room, kitchen and dining, spacious loft, two-car garage.

Optional: Courtyard, sliding door, bedroom 4.



MAIN FLOOR



UPPER FLOOR

PLAN 9

1,835 SF

3 - 4 BEDROOMS

2.5 BATHS

Residence nine is comprised of 3 to 4 bedrooms and 2.5 bathrooms on two levels. This home is designed with a spacious loft that can be optioned into a secondary bedroom. The kitchen, dining and guest room flow seamlessly from one to another creating an ideal living and entertainment space. A two-car garage is perfect for vehicles storage or work spaces.



A



B



C

FEATURES

A REFINED ARRIVAL

- Recessed Panel Beech Cabinets w/ hidden hinges
- Designer white interior doors and 3 ½" baseboards
- Kwikset Chrome interior door hardware
- 12" x 24" Dal Tile at master bath, secondary baths, powder, and laundry
- Mohawk Cooper Creek Carpet at bonus room, dining room, great room, and all bedrooms, per plan
- Inhaus Laminate flooring at entry, kitchen, and dining, per plan

CONTEMPORARY KITCHENS

- 30" stainless steel Frigidaire freestanding range
- 24" stainless steel Frigidaire dishwasher
- 30" stainless steel Frigidaire microwave/hood
- Spacious walk-in pantry, per plan
- Culinary island for preparation and dining, per plan

SOPHISTICATED MASTER SUITES

- Moen Eva chrome centerset faucet and matching bath hardware
- Moen Eva chrome plumbing fixtures
- Chrome bypass shower enclosure
- Dual vanities with Piedrafina Fusion Quartz, 1 ¼" flat polished edge countertops and 4" backsplash
- Medicine cabinet at vanity included
- Pre-wired for ceiling fan
- Sterling Vikrell shower unit

SECONDARY BATHROOMS

- Piedrafina Fusion Quartzcountertops with 1 ¼" flat polished edge and 4" backsplash
- Dual vanity sinks at select secondary bath, per plan
- Moen Eva chrome plumbing fixtures
- Moen Eva chrome centerset faucet and matching bath hardware

GREEN LIVING

- Sunpower solar power system lease program with purchase option
- Greenguard certified Vikrell tub/shower combination at secondary baths, Vikrell shower unit at master bath
- Rinnai tankless water heater
- 16 seer, 92% efficiency furnace
- Solar cooling optimized low-E and Argon dual pane windows
- Third party efficiency inspections
- LED lighting in all locations for greater energy efficiency
- Kelly-Moore low VOC finish interior paint
- Astronomical switch on exterior light fixtures
- White vinyl fencing

SITE PLAN



The developer reserves the right to make changes and modifications to the information contained herein. Availability, floor plans, measurements, specifications, features and building designs are subject to change without notice. Please contact a developer sales representative for details. E&OE

PRIVÉ RESEARCH